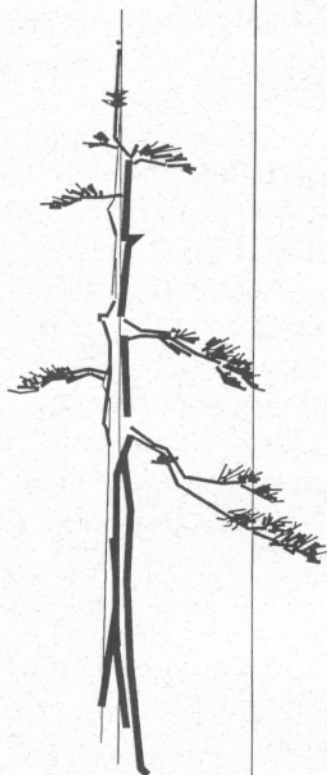


# BONSAI NEWS



*Milwaukee  
Bonsai Society*

P.O. Box 198  
Brookfield, Wisconsin  
53208-0198

Information Line  
414-299-9229

## October Meeting

We all have trees that we really like, but we don't quite know how to style them. In addition, we sometimes have been looking at a tree in a certain way for so long that we can only see what we have seen before. Our October meeting will use a technique that helps break this 'brain lock.' Here's what we will be doing. Everybody bring at least one tree. (Bring several if you want.) It should be a tree that has had some work done on it. One by one we will ask each person to bring his or her tree forward and we will put it on a turntable in front of everyone else. Then we ask for suggestions as to how the tree could be restyled. In other words, "If this tree were sitting on your workbench at home how would you style it?" You will be amazed at the number of, and the variation, in the suggestions that are offered. Although we will use some pieces of cloth to "cover" branches that someone thinks should be removed, **THERE WILL BE NO CUTTING!** Those who bring trees will go home with more ideas than they ever imagined. We will all learn from the suggestions offered. It is fun and educational, all at the same time. So come to the meeting and bring those trees!

In addition we will have our election of Officers for 2004. Ron, Mary and Ken have put together a good slate of candidates so come and make your vote count.

We will also have many items that we will be raffling off. There are some items that have been left over from the

workshops, there is a turntable kit, and many other items. Bring your money belt and take some of these home for the price of a raffle ticket.

## 2004 Election News

Don't forget to come to the October meeting as it is your chance to elect the new board for next year. The slate is as follows:

President	Jack Douthitt
First Vice-President	Kris Ziemann
Second Vice-President	Jean Sher
Treasurer	Karen Kleineider
Secretary	Darlene Shaginaw
Director (3 yr.)	Joe Herbert

Carryovers from previous years are:

Director (1yr)	Sharon Schmidt
Director (2yr)	Erskine Tucker, MD

Please don't miss your opportunity to cast your vote. Unlike California, we don't have recall elections. If they get out of control we just prune them back, or wire them in the direction we want them to grow. Unlike our trees this group will not get better with a little Gin!

Finally give any suggestions you may have for programs or artists you would like to see in the coming year, as this group is charged to plan the activities for 2004. If you tell them what you would like they can try to accommodate your wishes, but they need to know what those wishes are because they are bonsai hobbyists not *mind readers*.

Thank You from the Nominating Committee, *Mary Turner, Ken Hahn, and Ron Fortmann.*

## What's Inside?

Oct. Meeting .....	1
Election.....	1
Pres. Message.....	3
New Talent .....	2
Recognition.....	2
November .....	3
Survey .....	insert

## President's Message

Our September meeting was a lot of fun! Many people brought some of their "white elephants" to sell and some of us that brought material to sell also ending up buying more material to bring home. And many thanks to Mary Turner for the session on haiku. There were many outstanding haiku and they will start showing up in our newsletter. (*See the first place winner on the back of this issue*).

Years ago, an old friend by the name of Keith Scott told me that he used a particular technique in order to improve his ability as a bonsai artist. His philosophy was that one needed to "stretch" oneself in order to improve. So at least once each year he would select the worst piece of plant material that he could find and see how good a bonsai he could make of it. The point was to improve, by putting himself into a position where he really had to work to make something out of the material at hand.

In my opinion that same technique works for improving organizations. I remember the debate that went on before we hosted the Mid-America Bonsai Alliance (MABA) convention in 1995. There was a big concern about whether or not we had the ability to actually pull it off. We went ahead with the project and made it into a success. I am sure that having that positive experience behind us, gave us the confidence to apply for the 2002 American Bonsai Society (ABS) National Convention. When we were awarded that convention we went to work and made it into a huge success. Now we have successfully produced an eleven-day bonsai exhibit, which was also a roaring success. Each one of these events has stretched us as an organization and through this process we have all grown immensely.

Each of you contribute to the success of the Milwaukee Bonsai Society in your own way. By paying your dues you contribute to the financial health of the organization. By coming to meetings, and taking part in workshops, you show your support for the programs that we present as well as increasing your knowledge of bonsai techniques. By participating as an officer of the club, you help to meet the needs of its members and guide it forward into the future. We are happy to have each and every one of you as a member. We thank all of you for your assistance and your support.

## 2003 Joshua Roth New Talent Competition

Last year at the Milwaukee – ABS 2003 Symposium we instituted and produced the first North American New Talent Competition. The winner was Rob Kempinski from Florida. Jack Douthitt recently returned from the Pacific Northwest Bonsai Clubs Association/ABS convention in Seattle, where he produced the second annual New Talent Competition. There were eight finalists this year from four US states and Canada, including two women. After the finalists put in their eight hours of work on the collected Mountain Hemlocks, the headliners at the Convention, Chase and Solita Rosade, Colin Lewis and Charlie Anderson judged the results. Just like last year, the registrants at the convention had their opportunity to vote for their favorite. And just like last year, their vote mirrored the vote of the judges. The winners were then announced at the Saturday night Banquet. The Grand Prize winner was Peter Wilson from Port Alice, British Columbia, Canada, and the Runner-Up was Dr. John Quinn from Columbia, SC. The Joshua Roth Company from Albany, Oregon now sponsors the annual competition.

The Competition is going to be produced next year at the BCI/ABS Convention in St. Louis, Mo. (St. Louis in 2004 would be a good opportunity for some of our members to participate in the Competition!) The 2005 Competition will be produced at the World Bonsai Convention in Washington, DC. Looks like we started something!

## Recognition for Members

The garden of Adam and Mia De Lap was featured in the Sunday, September 14, 2003 issue of the *Milwaukee Journal Sentinel*. It is an oriental style garden and was pronounced a winner in the annual Mayor's Landscape Award competition. The judges liked the "blends of various species of trees, including tropical plants," and the "mixture of various Asian cultural plants. They liked the blend of water and stone, and the use of lawn ornaments." Our congratulations to Adam and Mia.



Michelle Zimmer was one of two people who designed and produced an informational brochure about the trees in the Frederick Law Olmstead designed Lake Park. The brochure has three self-guided loops that wind through the trails of Lake Park, while providing you with a guide for leaf identification and many descriptions of the trees growing there. She also conducts guided tours along the tree walk. The "Walk in the Park" was selected for inclusion in the "2003 Best of Milwaukee" feature in the October 2003 issue of *Milwaukee Magazine*. Congratulations to Michelle.

Also, there was a nice article about **Ambiance Floral and Bonsai** in the "Insider Views" section of the October issue of *Milwaukee Magazine*. **Antonio Crossetti** of Ambiance is a member of the club and received some nice publicity for his bonsai shop. Ambiance is a new shop in town and also carries bonsai and bonsai supplies. We welcome Antonio and the shop.

Another member, **Dr. Tom Roberts and his wife Mary**, were featured in a newspaper article about their work as volunteers at the Wildlife in Need Center in Oconomowoc. Their home has become an informal satellite of the center because of their work in rescuing and caring for injured wild animals. At the time of the article they were caring for 1 dog, 4 cats, 4 birds, 7 raccoons, 13 squirrels and one rabbit. Exciting work, Tom and Mary.

## Upcoming November Meeting


In November, the season for bonsai activity is beginning to slow down. But it does not stop. One of the chores that we often perform in winter is the sharpening of our tools. Sharp tools make cleaner cuts and help our trees heal faster. So, the first part of our November meeting will be a seminar on the sharpening of bonsai tools. The second part of our meeting

will concentrate on "how to use" some of the more common power tools. Although we will not be able to get everyone "hands-on" with the power tools we will give you enough information so that you can start working on your own. Don't miss it!

**Ambiance** *Floral & Bonsai*

2619 W. State Street Milwaukee, WI 53233  
 (414) 345-9810 (866) 345-9810



<p><b>Bonsai Services</b></p> <ul style="list-style-type: none"> <li>• Repotting</li> <li>• Landscape Design</li> <li>• Boarding</li> <li>• Revitalization</li> <li>• Bonsai Placement</li> <li>• Training</li> <li>• Special Orders</li> <li>• Technical Assistance</li> </ul>		<p><b>Other Services</b></p> <ul style="list-style-type: none"> <li>• elegant fresh floral arrangements for all occasions</li> <li>• exceptional green and tropical plant selection</li> <li>• delivery and shipping available</li> </ul>
---	--	---

*Ambiance Floral & Bonsai prides itself in giving its customers the highest quality trees and related services while providing unique and interesting bonsai specimens for your collection. We are located on the first floor of a grand Queen Anne Victorian — where your every selection creates a unique Ambiance.*

Hours: Monday thru Friday 9AM to 7PM and Saturdays 9AM to 5PM

	<p><b>Tony Plicka</b>        (414) 761-9298        Fax (414) 327-4882</p> <p><b>NINO'S</b>        Landscape Company</p> <p>P.O. Box 510108        New Berlin WI 53151</p> <p>Bonsai Supplier</p> <ul style="list-style-type: none"> <li>❖ Specimen trees</li> <li>❖ Stock material</li> <li>❖ Seedlings</li> <li>❖ Tools</li> <li>❖ Pots</li> <li>❖ Books</li> <li>❖ Videos</li> <li>❖ Mail Order</li> </ul> <p><i>Now accepting VISA and MasterCard</i></p>
--	--

**MBS Meetings and Information Line:**  
 The Milwaukee Bonsai Society meets on the first Tuesday of the month at 7 p.m. at Grace Lutheran Church, 3030 W. Oklahoma Avenue. Call the MBS Voice Mail/Message System at (414) 299-9229 to learn about upcoming events and meeting times. To contact the club via email: [mbs@asapnet.net](mailto:mbs@asapnet.net) Look for us on the web at: <http://www.asapnet.net/milwaukee-bonsai/index.html>

## Potential Programs for 2003 MBS PROGRAM QUESTIONNAIRE

Please check your answer to each question. The responses that are received will help your Executive Committee decide on the club programs for 2004.

We are investigating the following programs for 2004. Which would be of the most interest to you? Please rate them according to your interest. Number 5 is the highest level of interest while a number 1 would be the lowest level of interest.

Check Your Preference:

Name \_\_\_\_\_

(We tried this in 2003 and it did not accomplish what we intended, but are you interested in trying it again with a different artist?)

Indoor material \_\_\_\_\_

Slab making \_\_\_\_\_

Groves \_\_\_\_\_

Design and Composition \_\_\_\_\_

Bugs and Pests \_\_\_\_\_

Basics of bonsai soil \_\_\_\_\_

Winter protection \_\_\_\_\_

The following workshops are being considered. Which would be of the most interest to you? Please rate them according to your interest. Number 5 is the highest level of interest while a number 1 would be the lowest level of interest.

Check Your Preference:

A. Wiring Workshop - (Led by Club Members) A session to teach the basics of wiring. Each person would be wiring on one of his or her own trees \_\_\_\_\_

D. "What Next?" Workshop - (Led by Club Members) This would be for the benefit of people who have started a bonsai and want to know "What do I do next?" \_\_\_\_\_

E. Collecting Trip - a trip to a selected area for collecting of potential bonsai material. \_\_\_\_\_

F. A visit to the studio of Sarah Raynor - Sarah lives in Red Wing Minnesota And has indicated that we would be very welcome to pay her a visit. \_\_\_\_\_

G. A Slab Making Workshop - The making of slabs for our bonsai has become very popular. This would give each of us the opportunity to make a slab for one of our trees. \_\_\_\_\_

Our program on photographing your trees was stopped by a snow storm last year. Would you like to have it presented this year? Yes No (circle one)

Would you be interested in a "Study Group" that would meet on a Saturday separate from Club meetings? There would be no dues or officers. Just a group that meets to work on bonsai. Yes No

Please list below any other suggestions that you have for a club program.

---

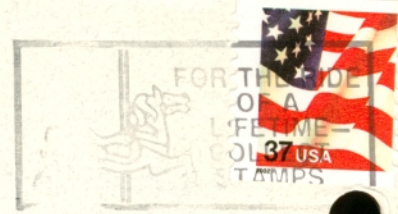
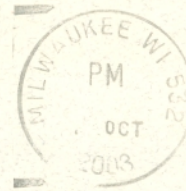
---

---





P.O. Box 198  
Brookfield, WI 53008-0198  
Return Service Requested



Kris Ziemann  
10932 North Wauwatosa Road  
Mequon WI 53097-3426

*Next Meeting of MBS  
Tuesday, October 7  
7 p.m. at Grace Lutheran Church*

53097+3426

**MBS Board - 2003**

- Jack Douthitt, *President*
- Houston Sanders, *First Vice President*
- Jean Sher, *Second Vice President*
- Russell Weiss, *Secretary*
- Kris Ziemann, *Treasurer*
- Sharon Schmidt, *Director*
- Dr. Erskine Tucker, *Director*
- Pam Woythal, *Director*
- Brian Palevac, *Past President*
- Ron Fortmann, *MABA Representative*
- Yvonne Szatkowski, *Newsletter Editor*

*Yellow tulips bloom,  
dancing gaily in the sun  
rabbits smack their lips!*

~ Jerry Niemiec



Members with questions or concerns  
for the Executive Committee should  
contact Russ Weiss, Club Secretary at  
cowbell@wi.rr.com