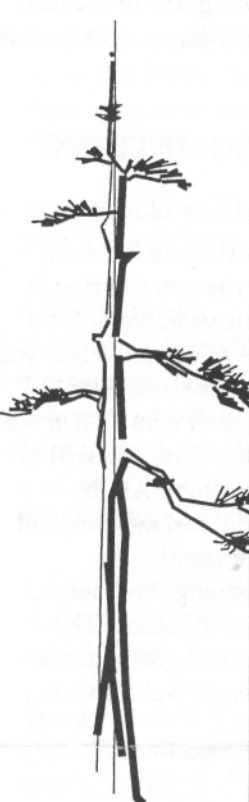


Sept 2005

# Bonsai News

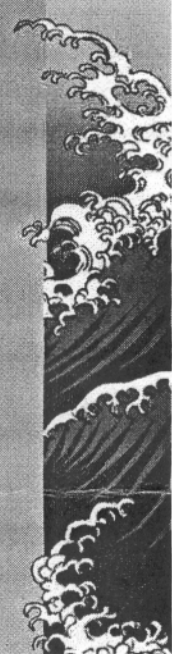


*Milwaukee  
Bonsai Society*

P.O. Box 198  
Brookfield, Wisconsin  
53208-0198

Information Line  
414-299-9229

*You are cordially invited to join the  
Milwaukee Bonsai Society  
Master Class Students  
for a Presentation of Trees  
And  
Discussion with Ted Matson  
On  
Tuesday, September 6, 2005 at 7 PM  
during the September MBS meeting.*



## NEW DUES

Time has come that we need to raise our dues. With rising costs for printing the newsletter, postage, costs for guest artists, etc., the board voted last month to raise dues to:

Individual	1 year - from \$22 to \$25
	2 years - from \$42 to \$48
	3 years - from \$60 to \$70

Family	1 year - from \$30 to \$35
	2 years - from \$58 to \$68
	3 years - from \$84 to \$100

Our renewal forms will show these new prices.

## KRIS' KORNER

Hi, all!

Our September meeting will be the culmination of a year of work in the Master's classes. Each student will bring in one or two trees to display / discuss. They are works in progress ("on-growing"). Ted Matson will provide critiques and commentary on these trees plus much more.

State Fair was a great success. Thanks again to all the volunteers who tree-sat and who brought trees for display. Each of the three shows was well presented. Kudos!!

Another word about the shows... Many members and passers-by commented on the beauty (quality) of the trees in our exhibits. The improvement of our trees is like watching our own child / pet grow. The changes aren't as evident to us as they are to others. But our continued efforts do pay off. One 'unbiased' member of MBS commented "I didn't notice anywhere near the same level of improvement in the overall quality of trees being displayed in Chicago." The judge from the third show, Bob Hampel from Minnesota, commented that the quality and professionalism of the display was outstanding.

*Kris*

### QUESTIONS...

1. Do you have a computer?
2. Do you have email?
3. Do you read articles about bonsai?
4. Do you have any cool things you do with your trees?

If so, please send #3 and/or #4 to our newsletter editor  
(bonsaidiot@earthlink.net).

### Tropicals Books

We're half way to putting in our 2nd order for the tropical "green sheet" book. Even though it focuses on tropicals, many other species

are included in this fact-filled book. If you wish to pre-purchase one, please email Kris (krisziemann@mac.com) or bring \$35 to the next meeting. We'd like to get the order in ASAP so as not to keep folks waiting.

## SOMETHING OLD ... SOMETHING NEW

At our October meeting we will again have our dead tree contest. We also invite you to bring in White Elephant items. But this year, we will be having a White Elephant Live Auction. When you bring your treasures in, you will be asked the minimum you will accept for each item. Then we'll have a live auction. To help the Club, we will ask that 10% of your sale go to the club. All the paperwork will be done for you, just sit back and enjoy the auction! If you have smaller items, you might consider grouping them into a "lot", i.e. 3 or 4 small pots sold together. The Minnesota Bonsai Society has had great success with their auctions, so we thought we'd give it a try!!

## MBS Officer and Board of Directors Nominations

### New members:

Treasurer: Mary Turner  
Director: John Moore

### Continuing Members:

President: Kris Ziemann  
1st Vice President: Scott Hurula, Sr  
2nd Vice President: Darlene Shaginaw  
Secretary: Sharon Schmidt  
Directors: Joe Herbert  
Allen Koszarek  
Past President: Jack Douthitt

Sincere thanks are extended from all of us to Karen Kleineider, Retiring Treasurer and Erskine Tucker, retiring Director, for their many hours of service to the Milwaukee Bonsai Society.

## **BUDDY BUCKS - What are they, anyway??** By Kris Ziemann

Sorry, there was some mix-up on the buddy bucks in the last issue. So, we're re-printing and including those who received buddy bucks for working State Fair and Bradley Gardens.

Many thanks to all who worked at November's FOLK FAIR 2004.

### 1 Buddy Buck

Joe Nemecek, Jerry Niemiec, Gen Molling, Tom Kerner, Jim Toepfer, Delores Day, Melba Stockhausen, Ralph Stockhausen, Marilyn McKnight, Scott Hurula, Jack Douthitt, Erskine Tucker, Tony Plicka, Jeff Moths, Camrin LaFond, Kris Ziemann, Steve Carini and Karen Kleineider

### 2 Buddy Bucks

Darlene Shaginaw, Ken Hahn, Sharon Schmidt and John Moore

Thanks to the following people who shared their expertise and donated their time to help out at this year's NOVICE CLASSES:

### 1 Buddy Buck

Ron Fortmann, Sharon Schmidt, Scott Hurula, Steve Carini, Jack Douthitt, John Moore, Pam Woythal, Tony Plicka, Camrin LaFond

### 2 Buddy Bucks

Jim Toepfer, Jean Sher, Allen Koszarek

### 5 Buddy Bucks

Kris Ziemann

ASIAN MOON volunteers were:

### 1 Buddy Buck

Ralph and Melba Stockhausen, Sharon Schmidt, Laura Larrabee, Elli Wilder, Houston Sanders, Marilyn McKnight, Camrin Lafond, Nick Barth, Kris Ziemann, Scott Hurula, Scott Hurula Jr., Karen Kleineider, Barb Zacharias

### 2 Buddy Bucks

Allen Koszarek, John Moore, Dolores Day, Erskine Tucker

### 3 Buddy Bucks

Darlene Shaginaw, Jean Sher

WAUWATOSA GARDEN TOUR volunteers were:

### 2 Buddy Bucks

Ken Hahn and Kris Ziemann

STATE FAIR volunteers were:

### 1 Buddy Buck

Carol Butula, Dick Butula, Dorothy Schenzel, Jerry Niemiec, Gen Molling, Craig Berg, Camrin LaFond, Houston Sanders, Jeff Moths, Erskine Tucker, Steve Carini, Milt Baas, Audrey Baas, Yvonne Szatkowski, Jim Wenders, Pat Basich, Jay Basich, Ken Krueger, Karen Kleineider, Nancy Ellis, Bill Ellis, Marilyn McKnight, Mary Ann Baragry, Don Gumieny and Karen Gumieny.

### 2 Buddy Bucks

Gregg Wein, Darlene Shaginaw, Joe Herbert, Ralph Stockhausen and Jim Toepfer.

### 3 Buddy Bucks

Melba Stockhausen and Sharon Schmidt

### 5 Buddy Bucks

Jean Sher, John Moore, Tony Plicka and Kris Ziemann

BRADLEY GARDENS volunteers were:

### 2 Buddy Bucks

Jean Sher, Allen Koszarek, Jack Douthitt and Steve Carini.

If we have missed anyone, please let us know.

## **IN SEARCH OF...**

In preparation for the MABA 2006 convention, we are starting our collection of plastic coffee 'cans'. We're looking for the small plastic coffee cans with lids (like the 13 oz Folgers). We have never filled a large coffee can, and these will be much easier to store. If you have any (or have friends who have any) could you please bring them to a club meeting at church? Many thanks.



Congratulations to the State Fair Winners!

A = Advanced I = Intermediate N = Novice  
Y = Youth O = Open

ALL PHOTOS BY JEAN SHER

**Exhibit #1 (Aug 4 - August 6) Fox Valley Bonsai / Milwaukee Bonsai Society**

*Best of Show*

Korean Hornbeam (O) - Dennis Chuchel (FVB)

*Awards of Merit*

Korean Hornbeam (O) - Dennis Chuchel (FVB)  
Dwarf Alberta Spruce (O) - Dennis Chuchel (FVB)

*Blue Ribbons*

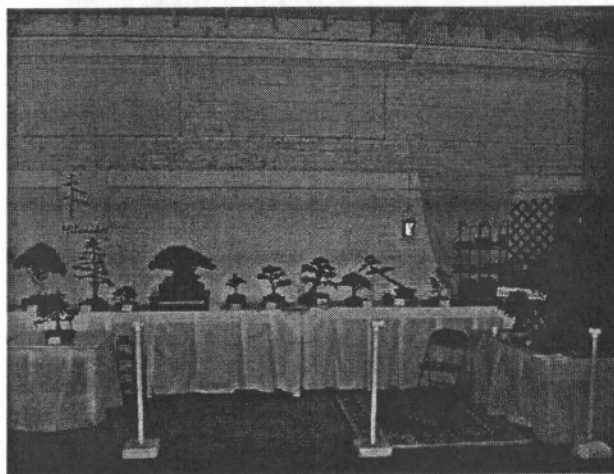
Korean Hornbeam (O) - Dennis Chuchel (FVB)  
Dwarf Alberta Spruce (O) - Dennis Chuchel (FVB)  
Korean Hornbeam (O) - Dennis Chuchel (FVB)  
Mugho Pine (O) - Dennis Chuchel (FVB)  
Larch Grove (I) - Dennis Dahlstrom (FVB)  
Juniper (I) - Dennis Dahlstrom (FVB)  
Boxwood (A) - Ron Fortmann (MBS)

*Red Ribbons*

Narrow Leaf Fig (O) - Dennis Chuchel (FVB)  
Juniper (I) - Dennis Dahlstrom (FVB)  
Jade Tree (I) - Dennis Dahlstrom (FVB)  
Bald Cypress (A) - Ron Fortmann (MBS)  
Korean Hornbeam (A) - Ron Fortmann (MBS)

*White Ribbons*

Geranium (O) - Dennis Chuchel (FVB)  
Bougainvillea (O) - Dennis Chuchel (FVB)  
Larch (I) - Merle Brimmer (FVB)  
Taiwan Fig (I) - Merle Brimmer (FVB)  
Crown Currant (I) - Ralph Mahn (FVB)



Appleton's Fox Valley Bonsai show, was excellent. The trees were an outstanding collection.



Three more Appleton winners!



**Tony Plicka**  
(414) 761-9298  
Fax (414) 327-4882

**NINO'S**  
Landscape Company

P.O. Box 510108  
New Berlin WI 53151      Bonsai Supplier

❖ Specimen trees   ❖ Stock material   ❖ Seedlings  
❖ Tools   ❖ Pots   ❖ Books   ❖ Videos   ❖ Mail Order

*Now accepting VISA and MasterCard*

**Your #1 Milwaukee Bonsai Source!**

**THE CITY GARDENER**

*Featuring  
Bonsai and bonsai accessories*

◆ Indoor and outdoor bonsai   ◆ Pre-bonsai  
◆ Pots   ◆ Bonsai soil   ◆ Wire   ◆ Tools   ◆ Books  
◆ Clay miniatures and more

*Plus*   We offer practical, easy-to-understand help in choosing and caring for your bonsai

1814 North Farwell Avenue  
Milwaukee, Wisconsin 53202  
(414) 224-8224

1 Block  
North of Brady Street

**Exhibit #2 (August 7 - 10) Milwaukee Bonsai Society**

*Best of Show*

English Boxwood (O) - Jack Douthitt

*Awards of Merit*

Crab Apple (A) - Steve Carini

Korean Hornbeam (A) - Steve Carini

Shimpaku (A) - Yvonne Szatkowski

*Blue Ribbons*

English Boxwood (O) - Jack Douthitt

Crab Apple (A) - Steve Carini

Korean Hornbeam (A) - Steve Carini

Shimpaku (A) - Yvonne Szatkowski

Blue Rug Cascade (A) - Yvonne Szatkowski

San Jose Juniper (A) - Yvonne Szatkowski

Shimpaku (N) - Joe Herbert

Saikei (I) - Kris Ziemann

Larch (O) - Jack Douthitt

*Red Ribbons*

Shimpaku (A) - Steve Carini

Shimpaku (N) - Joe Herbert

Green Mound Juniper (I) - Kris Ziemann

Smooth Leafed Elm (O) - Jack Douthitt

*White Ribbons*

Gingko (A) - Steve Carini

Common Privet (A) - Yvonne Szatkowski

Berkman Golden Arborvitae (I) - Jim Toepfer

Japanese Red Maple (N) - Bill Goetzke

Best of Show,  
Kingsville  
Boxwood,  
by J.Douthitt



Award of Merit, Korean Hornbeam,  
S. Carini



August 7-10, 2005 MBS Display at State Fair

Photos by Jean Sher

**Exhibit #3 (August 11 - 14) Milwaukee Bonsai Society**

*Best of Show*

Corkbark Elm (O) - Michelle Zimmer

*Awards of Merit*

Saikei (I) - Jean Sher

Korean Hornbeam (A) - Steve Carini

*Blue Ribbons*

Corkbark Elm (O) - Michelle Zimmer

Saikei (I) - Jean Sher

Korean Hornbeam (A) - Steve Carini

Smoke Bush (I) - Jean Sher

Kingsville Boxwood (Y) - Scott Hurula Jr

Green Mound Juniper (I) - Scott Hurula Sr

Shimpaku Juniper - Greg Wein

Needles Juniper (I) - Tom Kerner

*Red Ribbons*

Arborvitae (I) - Ralph & Melba Stockhausen

Potentilla (I) - Tom Kerner

Ponderosa Pine (I) - Tom Kerner

Juniper (I) - Jean Sher

Chinese Elm (A) - Steve Carini

Green Mound Juniper (A) - Scott Hurula Sr

Kingsville Boxwood (I) - Scott Hurula Sr

Korean Boxwood (A) - Houston Sanders

Wisteria (I) - Jim Toepfer

*White Ribbons*

Dwarf Hawaiian Umbrella Tree (I) - Jerry Nemiec

Ficus Benjamina (I) - Jim Toepfer

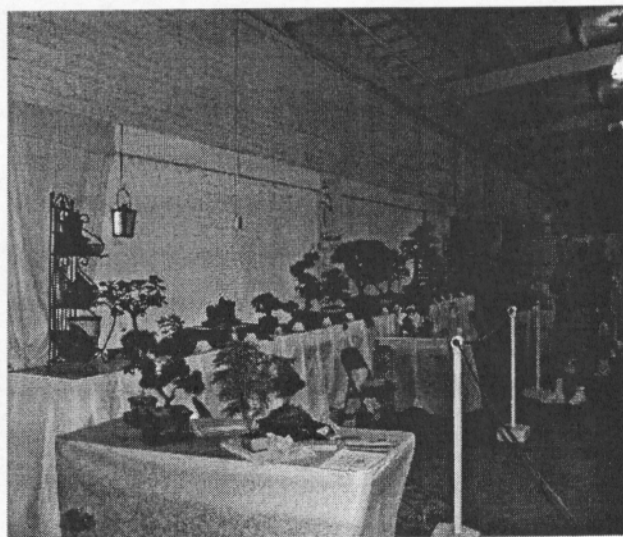
Chinese Elm (I) - Tony Plicka

Dwarf Burning Bush (I) - Tony Plicka

American Larch (I) - Tom Kerner.



Best of Show, Cork Bark Elm by Michelle Zimmer



Display Area - Show #3



Award of Merit, Korean Hornbeam, S. Carini





P.O. Box 198  
Brookfield, WI 53008-0198

**RETURN SERVICE  
REQUESTED**

Next Meeting of MBS  
7PM, Tuesday, Sept 6  
Grace Lutheran Church  
3030 W. Oklahoma



Kris Ziemann  
10932 North Wauwatosa Road  
Mequon WI 53097-3426

53097+3426

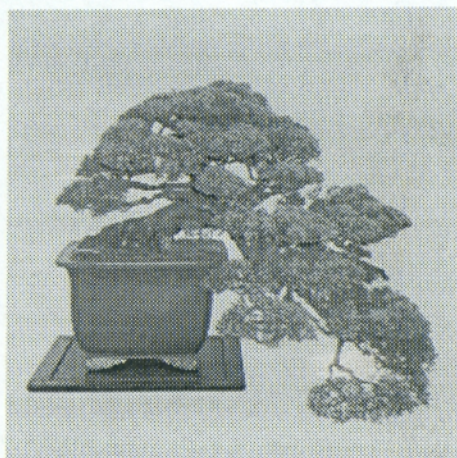


### **MBS Board, 2005**

Kris Ziemann – President  
Scott Hurula – 1<sup>st</sup> Vice President  
Darlene Shaginaw – 2<sup>nd</sup> Vice President  
Karen Kleineider – Treasurer  
Sharon Schmidt – Secretary  
Dr. Erskine Tucker – Board Member  
Joe Herbert – Board Member  
Allen Koszarek – Board Member  
Ron Fortmann – MABA Representative  
Jack Douthitt – Past President

### **Other Club Functions:**

Houston Sanders – Newsletter Editor  
Melba Stockhausen - Distribution  
Pam Woythal – Webmaster  
Joe Nemec - Librarian  
Mary Turner - membership chairperson  
Jean Sher - telephone response



*Dust of summer winds  
Molten sun and heat conspire  
And green life trembles*

**-Joe Nemec**