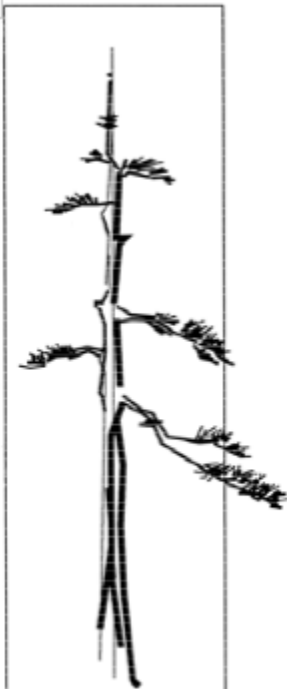


# BONSAI NEWS

March, 2020



Milwaukee  
Bonsai Society  
PO Box 240822  
Milwaukee Wi  
53224

Information Line  
414-299-9229

## April meeting

You all know better than most why this meeting is canceled. There is a world-wide virus going around. Just like a plant of yours with red spider mites or scales the treatment is to treat and isolate.

We will keep you updated about future events and meetings.

Bryan L. and your EC  
Committee



## April

April 4 —Novice Class #4\*

April 5-Intermediate Class #1\*

April 7 — **MBS meeting**

Fertilizing: Chemical vs  
Organic

April 26-Intermediate Class #2\*

## May

May 2 —Novice Class #5\*

May 5 — **MBS meeting**

BYO Repotting Workshop

May 9-10 Chicago Exhibit

May 24-Intermediate Class #3\*

## June

June 2 — **MBS meeting**

Group Slash

June 26-28—MABA\*

## July

July 7 — MBS picnic/meeting

Yamadori talk

On Hold Until Further Notice

**Next Meeting  
TBD**

**Boerner Botanical  
Gardens**

\*Open to MBS members only

## President's Message April 2020

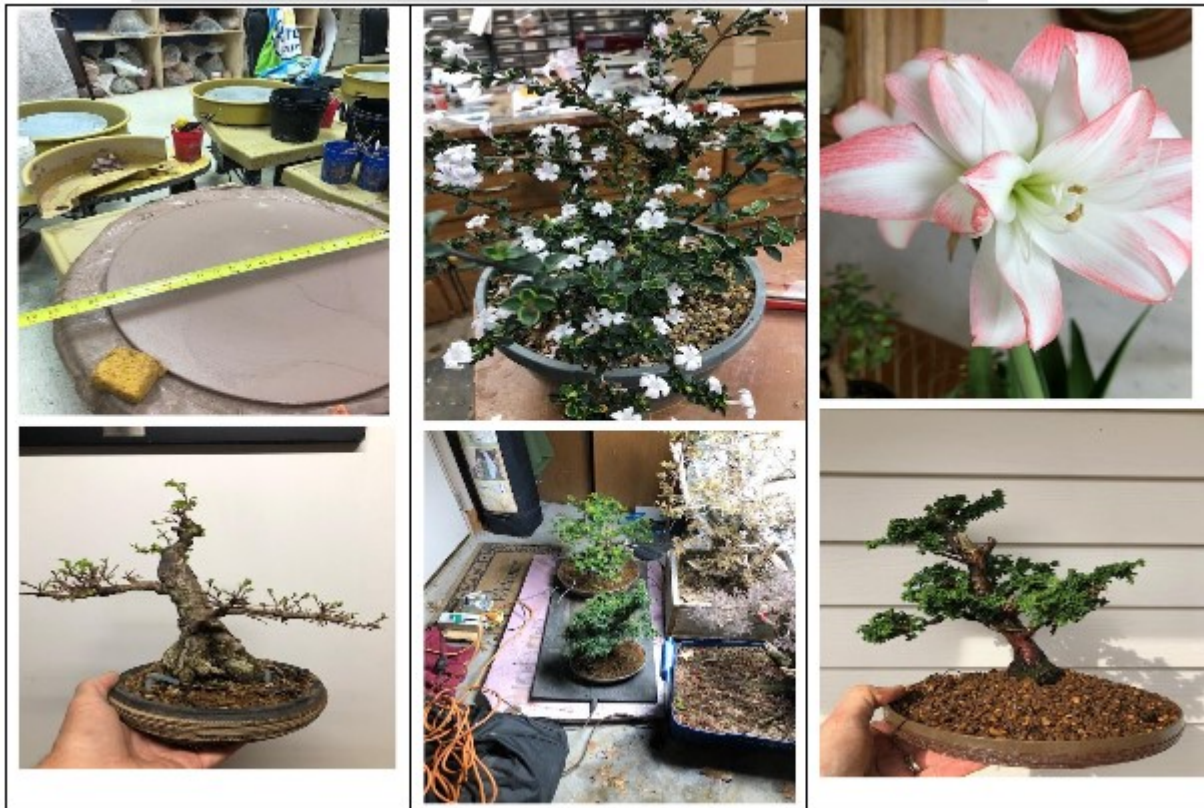
### Well Now, This is a Weird Spring

(I'm not talking about the weather. It's the dang virus!)

Here is a plan for us to remain a group and share our enjoyment of the art of bonsai. Please email pictures to me of the interesting things that are happening with your trees (<mailto:bryan11lor@gmail.com>). I will share them in some way with the group. For those of you who are not on Facebook, this is a little like that.

Here are a few of mine. Making a slab on the wheel for a pot, a serissa in bloom, one of my amaryllis, a Chinese elm, some newly repotted plants on a heat mat, and a hinoki that I bought from Mark Fields.

Stay safe and enjoy your hobby. We will keep you updated about our future schedule.





**WISCO BONSAI**

[www.WiscoBonsai.blogspot.com](http://www.WiscoBonsai.blogspot.com)  
[www.WiscoBonsai@gmail.com](mailto:www.WiscoBonsai@gmail.com)

# WISCO BONSAI

**DELIVERY TO MBS MEETINGS AVAILABLE.**

(ALSO TO THE GENERAL METRO AREA WITH MINIMUM PURCHASE OR SMALL FEE)

**PROVIDING SUPERIOR BONSAI PRODUCTS SUCH AS U.S. SOURCED SUBSTRATES, U.S. MADE CUT-PASTE AND CUSTOM BLENDED FERTILIZERS.**

**SEE ALL THE PRODUCTS:** [www.WiscoBonsai.com](http://www.WiscoBonsai.com)

ALSO TAKING ORDERS FOR LARGE QUANTITIES OF SUBSTRATE

**contact:** [WiscoBonsai@gmail.com](mailto:WiscoBonsai@gmail.com)

WELCOME TO

Greg R as a new Director on the Executive Committee

Thank you

Rick W for taking on the Secretary position for the Executive Committee



## Flowers! Flowers Everywhere!

By Michelle Z.

Who: MBS members

What: Flowering bonsai

When: May and June, 2020

Where: The Bonsai Exhibit at Lynden Sculpture Garden

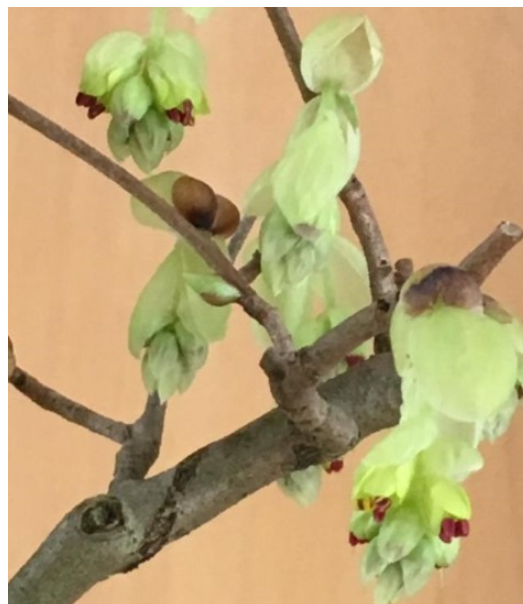
Why: Because we can!

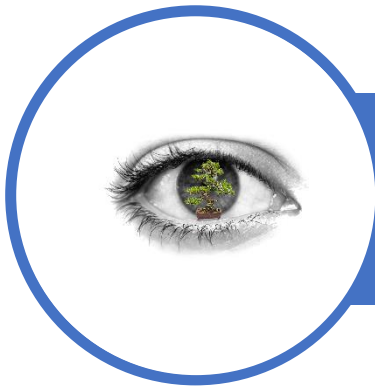
Spring and World Bonsai Day (May 9, 2020) is the time to appreciate our flowering bonsai, but, even though we know flowers will come, the exact timing is unpredictable—that's why it is so difficult to plan a one- or two-day show. But-- we can use the exhibit at Lynden to showcase our flowering trees when they are at their best! How lucky we are!

In 2020, we would like to use the months of May and June to rotate flowering bonsai through the exhibit. Forsythia, lilacs, wisteria, hawthorns, crabapples, apples, plum, pear, apricot, quince, azaleas,... pyracantha, magnolia, pomegranate, dogwood, potentilla, persimmons, cotoneaster, cherry, crape myrtle, bougainvillea, water jasmine, Carissa, Serissa... Your tree can be the star of the show for a few days, or a week or a month, if it's in bloom.

The process is easy. Snap a photo of your tree in bloom with your phone and e-mail it to Michelle Z. at [mgaz.md@gmail.com](mailto:mgaz.md@gmail.com). I'll contact you and we will work out the details. With your permission, we can showcase the tree on the Milwaukee Bonsai Foundation and the Lynden Sculpture Garden websites.

This is a wonderful opportunity to share our beautiful hobby with others, so, please plan to participate. This will be fun!





# MABA/MILWAUKEE 2020

WE COME TOGETHER TO MAKE OUR COMMUNITIES STRONGER  
THROUGH BONSAI

## INTRODUCTION

On June 25-28, 2020, Bonsai artists and MABA members are heading to MABA/Milwaukee Convention! [Read more.](#)

## ARTIST / WORKSHOPS

Beginner friendly artist will help you get started. [Read More.](#)  
One of the most enticing events of any bonsai convention should be the workshop and material opportunities. [Read More.](#)

## PLANNING

Learn from the best is the first of 10 reasons to attend MABA Milwaukee regional convention. [Read More.](#)  
Book your accommodations, purchase registration and Plan your daily activities. [Read More.](#)

## VENDORS / EXHIBIT

The 2020 convention will feature a Thursday evening reception dedicated to the vendors. [Read More](#)  
And an innovative, world class MABA exhibit. [Read More](#)

## CHALLENGES

As the COVID-19 (novel coronavirus) outbreak continues to develop, our mission is to put people first. We look to our own values to create solutions that benefit our participants, vendors and artists. We want you to feel confident as you enjoy your time with MABA/Milwaukee 2020, and remain diligent in our commitment to providing a safe environment for all who visit.

With MABA/Milwaukee 2020 just over 100 days away, we will continue to make decisions informed by the latest information from local, federal and international health authorities, including the [World Health Organization](#), the [Centers for Disease Control and Prevention](#), the [U.S. State Department](#), and the Government of France.

## OUR COMMITMENT

Our commitment is to you during this time of uncertainty:

- Continue to uphold the highest levels of health and safety standards that meet CDC guidelines
- A warm welcome with the Milwaukee hospitality you've come to expect
- Updates on visiting Milwaukee surrounding COVID-19 [Visit Milwaukee webpage](#) to help you stay informed of any travel advisories or restrictions
- Updates on Four Points by Sheraton Milwaukee NorthShore [Travel Information webpage](#).

We are prepared to navigate through these challenging circumstances and want to assure you that your health and safety is our top priority.



PO Box 240822  
Milwaukee, WI 53224  
Www.milwaukeebonsai.org  
RETURN SERVICE REQUESTED

Next MBS meeting will be  
TDD  
Boerner Botanical Gardens  
9400 Boerner Dr  
Hales Corners, WI 53130

#### 2020 MBS OFFICERS

President [Bryan L](#)  
First VP [Randy W](#)  
Second VP [Erich B](#)  
Secretary [Rick W](#)  
Treasurer [Clif O](#)  
Director [Phil R](#)  
Director [Greg R](#)  
Director [Dave M](#)  
Past Pres. [Melissa J](#)

#### Other Club Functions

Newsletter [Melissa J](#)  
Webmaster [Pam W](#)  
PAB Board—Ron F, Houston S & Judy S



Things at readiness  
With budding trees, pots and tools  
The season begins  
~Joe N.