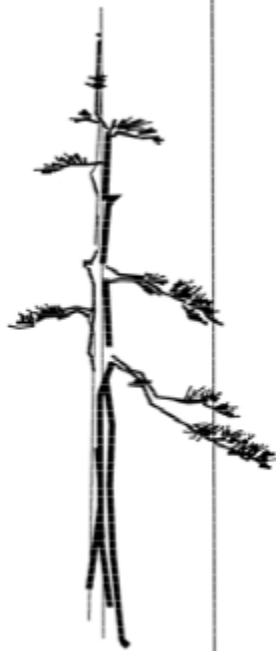


# BONSAI NEWS

April 2022



*Milwaukee  
Bonsai Society  
PO Box 240822  
Milwaukee Wi  
53224*

## Upcoming meeting

The April 2nd meeting will continue our series on repotting. This meeting will cover repotting bonsai-pot-to-bonsai-pot while still talking about the differences and complexities of other repotting situations.

Brian and Steve both have many trees they repot each year and have a lot of tips to pass on to help make this year's repotting season a success for you and your trees.

Read a more detailed description of the meeting further in this newsletter and plan on joining us for the April repotting demo.



## April

April 2 — Demo of repotting from a bonsai pot

April 9—Novice Class\*

April 16 — Bonsai Skills Building\*

## May

May 7 — Horticulture

May 14 — World Bonsai Day

May 21 — Bonsai Skills Building\*

## June

June 4 — Wiring demo on branch samples

June 23-26 — MABA

## July

July 2 — Basic Styling

## August

August 4-14 — State Fair

August 6—Summer cutback

August 7 — Bonsai Skills Building\*

August 27-28 Annual Exhibit  
Lynden Sculpture Gardens

\*Open to MBS Members Only

## Next Meeting

**April 2, 9am  
At Boerner  
Botanical  
Gardens**

## President's Message

Happy Spring!....almost anyway. Repotting season is in full swing for a lot of us as the weather starts to warm. It seems like every year I miss the window on a few trees. Our April club meeting will continue our series on repotting and will be as informative as ever.

I also want to encourage everyone to bring one or more of your trees to our meetings. If you're new to the club and need some advice, have been around a few years and are working on an interesting project, or just want to show off your tree, all are welcome. It's amazing what you can learn from having a discussion with members that have been in the bonsai world for a while.

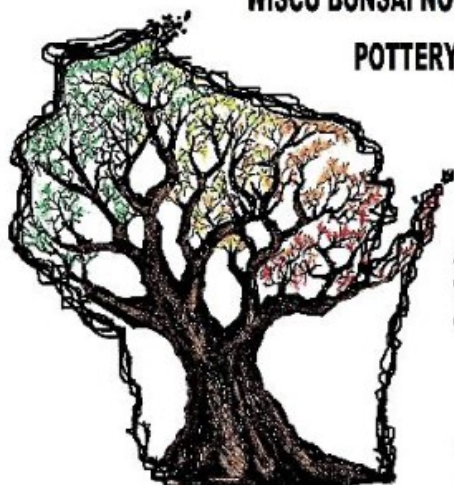
Your Executive Committee has been hard at work planning our upcoming 51st annual exhibit. We have secured Jim Doyle as our guest artist and judge. Cousins will have their food truck there on Saturday from 11am - 3:30/4pm ish. Three of our club members will be vendors this year. Please be sure to check out their wares and support our local bonsai suppliers.

Looking forward to you all at the next meeting.

Erich

President

**WISCO BONSAI NOW HAS THE AREA'S LARGEST SELECTION OF ARTISIAN, HANDMADE BONSAI POTTERY, MUCH OF WHICH CONSISTS OF LOCAL AND REGIONAL ARTISTS.**



**WE ALSO NOW CARRY A LINE OF TOOLS GEARED TOWARD THE BEGINNER AND NOVICE AMONG US, ALONG WITH ALL MANNER OF BONSAI SUNDRIES, SUCH AS, COPPER & ALUMINUM WIRE, JIN SEAL, WOUND PUTTY, ETC.**

**AND OF COURSE THERES THE SUBSTRATE, WISCO GOLD... ASK FOR IT BY NAME !!! WE ALSO OCCAISIONALLY HAVE OTHER RAW SUBSTRATE COMPONANTS AVAILABLE (PUMICE, LAVA, ETC).**

**GOT ORCHIDS ? WE HAVE A SUBSTRATE FOR THOSE TOO !!!**

[WiscoBonsai@gmail.com](mailto:WiscoBonsai@gmail.com)

414-248-3827

[www.WiscoBonsai.com](http://www.WiscoBonsai.com)

**WISCO BONSAI**  
www.WiscoBonsai.com

**DUE TO COVID, SHOP CURRENTLY OPEN BY APPOINTMENT ONLY AND ALL SAFETY MEASURES ARE IN PLACE.**

## April Club meeting... Repotting Demo

Brian S and Steve C

We are officially in repotting season... yea !!

Brian and Steve have different overwintering set ups. Both have a “greenhouse” but Steve’s is exposed to some sun while Brian’s is in his garage. How does that effect their repotting schedules? Come to the April MBS meeting and learn about these differences and watch a repotting demo, learn a bit about soil choices and tie in techniques as well.

There are many types of repotting. Two types would be repotting a collected tree or a nursery grown tree into its first bonsai pot. These two projects, though both have similarities, are **TOTALLY DIFFERENT** scopes of work. Then there is the more common repot where we are moving an existing bonsai from its current bonsai pot into the same or another bonsai pot.

Come to the April meeting and watch a bonsai-pot-to-bonsai-pot repot while you learn about the differences and complexities of other repotting situations. You will witness all the steps you should consider doing while carrying out this annual bonsai practice.

When it’s repotting time... that means we are entering **SPRING**... certainly an exciting time for bonsai practitioners and hobbyists.

Join Brian and Steve on Saturday, April 2nd at Boerner Botanical Garden at 9:00 AM.

### **Ancient Arts Bonsai**

Bonsai Supplier Established  
in 2005

Bonsai a Growing Hobby  
Wisconsin's Leading Full Line Bonsai Supplier

Tools, Wire – Aluminum & Copper, Pots, Fertilizers  
Soils – Akadama, Lava, Pumice, Kanuma, Blends  
Trees – Tropical, Deciduous, Conifers, Evergreens  
Services – Lessons, Consults, Repotting, Wiring, Boarding

See our updated Website: [aabonsai.com](http://aabonsai.com)

Email – [aabonsai@charter.net](mailto:aabonsai@charter.net)

Phone – 262-490-8733

## How about coming with us to dig up some free burning bushes?

Burning bushes can make great bonsai but in the wild they can spread and get out of control. I have 4 of them in my collection of trees. They are easy to care for, they branch out easily, the leaves are small, they flower in the late spring and have red leaves and orange berries.

Last year I saw quite a few of the plants growing in Potters Forest. This old growth of trees is right next to the Boerner property. It is owned by the Milwaukee Public Schools. I contacted the guy in charge of the forest and we met there last spring. I showed him all of the out-of-control trees that are spreading in the forest. He said that I can help myself to what ever I wanted. I may have taken 12-15 of them and gave most away.

I contacted him again this year and asked him if I can have some more. He said please take all that I want. I went to the woods with member Jim W. to survey the size of the project. There are HUNDREDS burning bushes there. We marked 50 of them with blue forestry tape so people that have trouble identifying them can dig some up.

Our next meeting is on April 2<sup>nd</sup>. I will bring some examples of burning bushes but not the 3' bonsai that I have. The day after the meeting Sunday April 3<sup>rd</sup> at 10:00 am we will digging up the trees. I'm telling you this ahead of time so you can get prepared with pots and soil to plant your trees. I have some lite soil from club repotting but feel free to get better soil from Brian, Ron or Kevin. Bring bags to carry your trees in to get back to your car. The woods is about 2-300 yards from the Boerner parking lot. We will meet in the lot at 10:00 and walk to the woods. I will probably get their earlier. I like digging up trees in the wild.

This is a great club event. They will make great trees and you are helping to clean up an invasive species in a cool forest. Bring a branch cutter, a shovel and big bags for your new treasures. Please come and help.

**Yamadori Rules!!!!**

**Bryan 414-364-5253 with any questions**

## LSG Volunteers Needed 2022

MBS members wishing to volunteer at the bonsai exhibit at Lynden Sculpture Garden (LSG) for the 2022 season are asked to meet for an orientation/ cleanup meeting at **noon, Saturday, April 30 or Sunday, May 1** on the bonsai patio at the exhibit @ LSG. Raindate: noon, Saturday, May 7.

No experience is necessary.

Please bring your calendars and be prepared to sign up for May and June dates. The exhibit is open on Wednesdays, Saturdays and Sundays during usual LSG hours.

Wear old cloths and bring your tools and maybe a tabletop turntable.

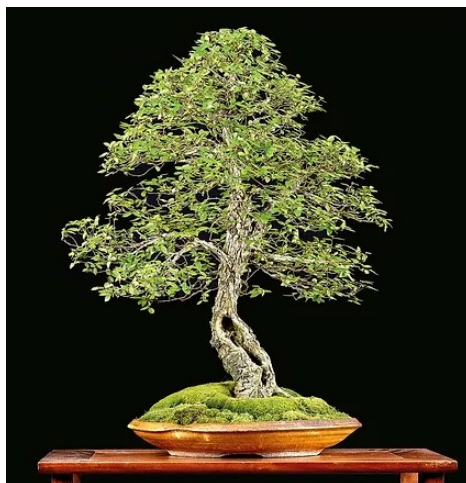
We will be refreshing the exhibit area, patio, gates and changing house, cleaning, weeding, raking gravel and sanding display benches.

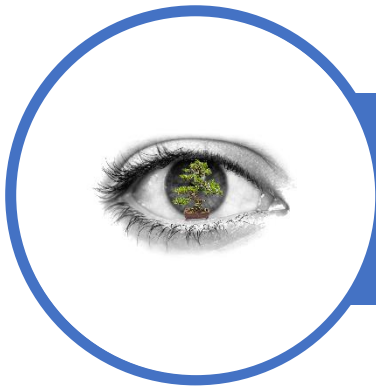
We will prepare the bonsai for exhibit. We can work until the garden closes at 4 p.m.

We plan to open the exhibit to the public on **World Bonsai Day, Saturday, May 14**. If all goes well, we may be able to host a soft opening on Sunday, May 8 for Mother's Day.

Anyone interested, please contact Michelle Z. ([mgaz.md@gmail.com](mailto:mgaz.md@gmail.com)) so I'll know how many to plan for. Can't wait to get started!

<https://www.milwaukeebonsaifoundation.org/>





# MABA/MILWAUKEE 202TWO

WE COME TOGETHER TO MAKE OUR COMMUNITIES STRONGER THROUGH BONSAI

## MABA

The Mid-America Bonsai Alliance (MABA) is an organization made up of local bonsai clubs and societies from nine Midwest U.S. states and Canadian provinces.

## MBS

The Milwaukee Bonsai Society (MBS) mission is to create a rich and diverse community through its inspiring bonsai exhibits, education, and community engagement.

## SAME VISION

Sharpen Your Vision  
MABA/Milwaukee 2020  
[www.milwaukeebonsai.org/maba](http://www.milwaukeebonsai.org/maba)



June 25 - 29, 2020  
Hawthorn and Bower  
1839 Preiss Ave. Antioch  
1839 Preiss Ave. Antioch, IL

François Jeker, France  
Tad Mason, Japan  
Mark Strub, Canada  
Soren Morken, Norway  
Arndt Peter, USA  
Lloyd Nollan, Canada  
Shane Smith, USA  
Scott Beardsley, USA

## MORE WORKSHOPS

On June 23-26, 2022, Bonsai artists and MABA members are heading to Milwaukee, WI for the MABA/Milwaukee Convention! In part to see headlining artist François Jeker from France or any of the other nine artists.

Following the unprecedented 2020 pandemic we postponed this convention twice. The safety and the well-being of all those that come together for this event will always come first. Now with the country starting to feel safe, our partner artist and vendors agree to go forward.

Additionally, the hotel has spent this past year remodeling and has also agreed to continue as host hotel and has not changed room rates or the special breakfast package. **With this remodel, we also have room for three more workshops!**

If you have a registration from a previously postponed MABA/Milwaukee 202x convention, you are all good. All registrations and workshops are automatically transferred to MABA/Milwaukee 202Two in June of 2022 so no action on your part is required.



Above is a rendering of innovative world class MABA exhibit, a look at the host hotel for your accommodations and headlining artist François Jeker from France.

Due to the evolving nature of the circumstances surrounding COVID-19, we are committed to announcing our full Health & Safety plan no later than 30 days before the show.

We can't wait to see you this spring!

The MABA/Milwaukee 2020 Committee and Team.



PO Box 240822  
Milwaukee, WI 53224  
[www.milwaukeebonsai.org](http://www.milwaukeebonsai.org)

Next MBS meeting will be  
April 2, 2022 @ 9am  
Boerner Botanical Gardens

## 2022 MBS OFFICERS

President [Erich B](#)  
1st VP [Pam W](#)  
2nd VP [Teri W](#)  
Secretary [Rick W](#)  
Treasurer [Clif O](#)  
Director [John N](#)  
Director [Greg R](#)  
Director [Irene H](#)

Past Pres.

### Other Club Functions

Newsletter [Melissa J](#)  
Webmaster [Pam W](#)

PAB Board—Ron F, Houston S & Judy S



Bougainvillea, I

Thought you were dead. Kidding!

So glad you are back.

~Kate Stewart