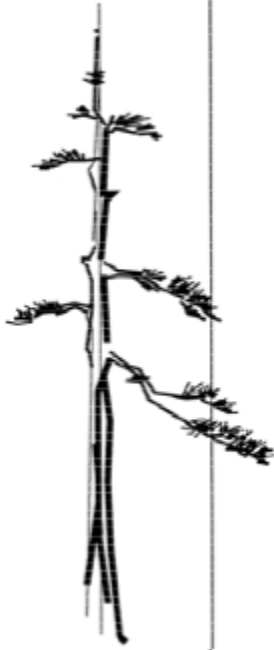


BONSAI NEWS

June 2022



*Milwaukee
Bonsai Society
PO Box 240822
Milwaukee Wi
53224*

Upcoming meeting

The June meeting will be an interesting morning for all. Bring in a tree to talk about, get your questions answered or get suggestions for the next steps in the tree's journey.

All trees and experience levels are welcome. Getting advice from other members is a great way to continue learning bonsai.

We are lucky that the members of MBS enjoy sharing their advice and helping other members.

Bring your tree and show it off or get some advice.

June

June 4 — Bring your tree in for discussion

June 23-26 — MABA

July

July 2 — Basic Styling

August

August 4-14 — State Fair

August 6—Summer cutback

August 7 — Bonsai Skills Building*

August 27-28 Annual Exhibit
Lynden Sculpture Gardens

September

Sept 3 — Wire a tree

October

October 1 — Selecting
Nursery Material

November

November 5 — Fall work,
cutback, shoot selection

*Open to MBS Members Only

Next Meeting

**June 4, 9am
At Boerner
Botanical
Gardens**



President's Message

Happy Spring, Fall, Summer fun weather in Wisconsin. I hope the warm weather will be staying this time.

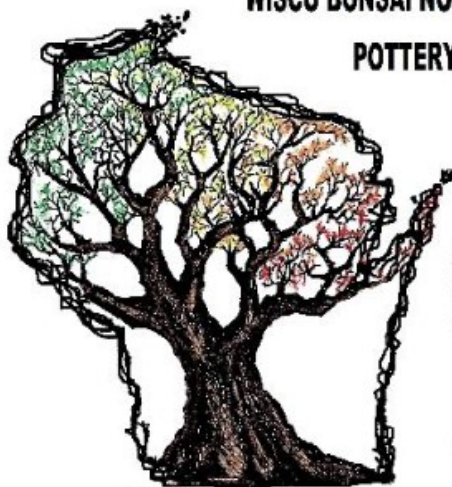
The long awaited MABA volunteer signups are available by clicking on the link below. Please be sure to check out what is available. There are plenty of opportunities. Sign up for State Fair will be coming soon followed by the Annual Exhibit. I look forward to see many new faces volunteering. You don't have to be a bonsai expert to volunteer, just willing to help.

Also, if you volunteer at least eight hours, you will be invited to the end of the volunteer dinner in October, the exact date and location will be shared soon.

Erich

[MABA volunteer signups](#)

WISCO BONSAI NOW HAS THE AREA'S LARGEST SELECTION OF ARTISIAN, HANDMADE BONSAI POTTERY, MUCH OF WHICH CONSISTS OF LOCAL AND REGIONAL ARTISTS.



WE ALSO NOW CARRY A LINE OF TOOLS GEARED TOWARD THE BEGINNER AND NOVICE AMONG US, ALONG WITH ALL MANNER OF BONSAI SUNDRIES, SUCH AS, COPPER & ALUMINUM WIRE, JIN SEAL, WOUND PUTTY, ETC.

AND OF COURSE THERES THE SUBSTRATE, WISCO GOLD... ASK FOR IT BY NAME !!! WE ALSO OCCAISIONALLY HAVE OTHER RAW SUBSTRATE COMPONANTS AVAILABLE (PUMICE, LAVA, ETC).

GOT ORCHIDS ? WE HAVE A SUBSTRATE FOR THOSE TOO !!!

WiscoBonsai@gmail.com 414-248-3827 www.WiscoBonsai.com

WISCO BONSAI
www.WiscoBonsai.com

DUE TO COVID, SHOP CURRENTLY OPEN BY APPOINTMENT ONLY AND ALL SAFETY MEASURES ARE IN PLACE.

The Novice Class for 2022 has completed their five sessions of study of fundamental bonsai practices. This year we had 10 individuals take the initiative to start building a solid foundation for their bonsai journey. All students selected flowering trees, either a Japanese Quince, Camellia, or Dwarf Blueberry. And after a month on their own all trees are still alive.

Congratulations to the 2022 Graduates:

Thomas Bathke

Michael Gill

Jamie Lynn Johnson

Patrice Kretlow

Philip Pierce

Zack Sprague

Kristan Strukel

Rob Sunderlage

Joe Thorstensen

Jenna Watkins

Best Wishes to all my students,

Ron Fortmann

Novice Class Instructor



The Daylily Society of SE WI

DSSEW.org

Annual Daylily Sale

Held the 1st Saturday in June, 7:30am to noon at The Brookfield Farmers Market (16900 W Gebhardt Rd, Brookfield, WI. In front of Brookfield Central High School)

Over 200 Cultivars for Sale

Pictures & descriptions available at the sale and online::

WWW.DSSEW.ORG



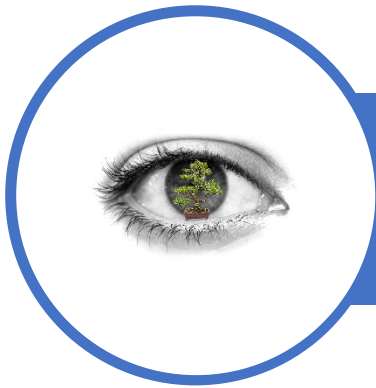
Ancient Arts Bonsai

Bonsai Supplier Established
in 2005

Bonsai a Growing Hobby
Wisconsin's Leading Full Line Bonsai Supplier

Tools, Wire – Aluminum & Copper, Pots, Fertilizers
Soils – Akadama, Lava, Pumice, Kanuma, Blends
Trees – Tropical, Deciduous, Conifers, Evergreens
Services – Lessons, Consults, Repotting, Wiring, Boarding

See our updated Website: aabonsai.com
Email – aabonsai@charter.net
Phone – 262-490-8733



MABA/MILWAUKEE 202TWO

WE COME TOGETHER TO MAKE OUR COMMUNITIES STRONGER THROUGH BONSAI

MABA

The Mid-America Bonsai Alliance (MABA) is an organization made up of local bonsai clubs and societies from nine Midwest U.S. states and Canadian provinces.

MBS

The Milwaukee Bonsai Society (MBS) mission is to create a rich and diverse community through its inspiring bonsai exhibits, education, and community engagement.

SAME VISION

Sharpen Your Vision
MABA/Milwaukee 2020
www.milwaukeebonsai.org/maba



June 25 - 29, 2020
Lodging and Food
Registration Online
<https://www.eventbrite.com>

Trainers/Instructors:
Ted Mazoni, Richard
Mark Strub, Rick
Soren, Mark K. Kasper,
Arthur P. P. Hill,
Lloyd P. Hill, Robert
Soren, Scott Soren,
Scott Beckwith, Richard

CALL TO ACTION

A Call To Action is an invitation for you to take a desired action. With the MABA Milwaukee Convention just a few short weeks away these few actions will let you know what to do next.

First deadline is approaching. The hotel's Discounted Rate Deadline is May 22, 2022 and it includes up to 4 hot breakfasts. **Our discounted rate cannot be guaranteed after this deadline, Book Now**
<https://www.marriott.com/event-reservations/reservation-link.mi?id=1629137175576&key=GRP&app=resvlink>

Another deadline approaching is signing up to exhibit your tree. Get 2 full critiques from headlining artist. Learn how you can take your tree to the next level:
<https://www.eventbrite.com/e/maba-202two-tree-registration-tickets-310719188457>

There are five raffles during MABA/Milwaukee 2022. Silent Auctions and a Live Auction. Your generous donations and continued support make a world of difference in our Bonsai community. **Support us because we want to continue to offer bonsai programs and horticulture education for our region of the country.**
http://www.milwaukeebonsai.org/maba/docs/MABA_Donation.pdf

There are a few good spots left for workshops. We've noticed a significant increase in fees for material and shipping. This impact will begin to get worse in the next few months. **Take advantage of all our planning and grab a workshop while you still can:**
<https://www.eventbrite.com/e/mabamilwaukee-202two-tickets-86220031435>

We come together to make our communities stronger through bonsai. **Your turn to BE AWESOME and volunteer at the event:**
<https://www.eventbrite.com/e/maba-volunteers-tickets-341007642037>

Meet the Artist Reception on Thursday afternoon, a Vendor Reception on Thursday night, access to lectures, demonstrations and observation at all workshops. Buffet Dinner on Friday night and Saturday Banquet with Silent and Live auctions. **Don't Miss out - Register Online:**
<https://www.eventbrite.com/e/mabamilwaukee-202two-tickets-86220031435>

WANTED!!!

Bonsai addicts last seen in Franklin Wisconsin taking yews from a yard! Known to be armed with many sharp tools!

		
<u>Joe</u> Look for identifying scars on legs	<u>Rob</u> The ring leader	<u>Val</u> Don't be fooled by her sweetness

Known to be holding an innocent old guy hostage



We all had fun in this quickly organized yew dig. We came out with 4 bushes that will be great trees in some time.

IF YOU SEE THESE BONSAI ADDICTS ASK THEM ABOUT THEIR ESCAPE. Yamadori Rules!!!

More pictures of the fun. <https://photos.app.goo.gl/8M5AAMZMdEDst8dB8>

Date: _____

**Yes, I'd like to join the Lynden Sculpture Garden.
Discounted Rate for Milwaukee Bonsai Society Members**

MEMBERSHIP BENEFITS

- Free admission to the Lynden Sculpture Garden during its open days/hours.
- One complimentary admission pass for Individual/Student/Senior members; two complimentary passes for Dual/Family members.
- Members may purchase additional guest passes for \$5 each.
- Discounts on classes, camps and workshops.

ANNUAL MEMBERSHIP LEVELS (choose one)

___ \$20 – Individual

___ \$40 – Family (includes two adults and all children aged 6-17)

THIS IS A (choose one) ___ New Membership ___ Renewal

CONTACT INFORMATION

Name 1: _____

Name 2: _____

Address: _____

City/State/Zip: _____

Phone: _____ Email Address: _____

PAYMENT

Membership \$ _____

Total Amount Paid \$ _____

- Cash Check (*made payable to Lynden Inc*)
 MasterCard Visa Discover American Express

Credit Card Number	Expiration	CSC
--------------------	------------	-----

Signature

PLEASE MAIL TO: Membership, LYNDEN SCULPTURE GARDEN, 2145 W. Brown Deer Rd,
Milwaukee, WI 53217

For office use only: Member No. _____ Entered _____ Sent _____ Payment Processed _____



PO Box 240822
Milwaukee, WI 53224
www.milwaukeebonsai.org

Next MBS meeting will be
June 4, 2022 @ 9am
Boerner Botanical Gardens

2022 MBS OFFICERS

President [Erich B](#)
1st VP [Pam W](#)
2nd VP [Teri W](#)
Secretary [Rick W](#)
Treasurer [Clif O](#)
Director [John N](#)
Director [Greg R](#)
Director [Irene H](#)
Past Pres.

Other Club Functions

Newsletter [Melissa J](#)
Webmaster [Pam W](#)

PAB Board—Ron F, Houston S & Judy S



Birds singing madly
While pink and white flowers glide
With sweet smelling rain

~Ryka Aoki