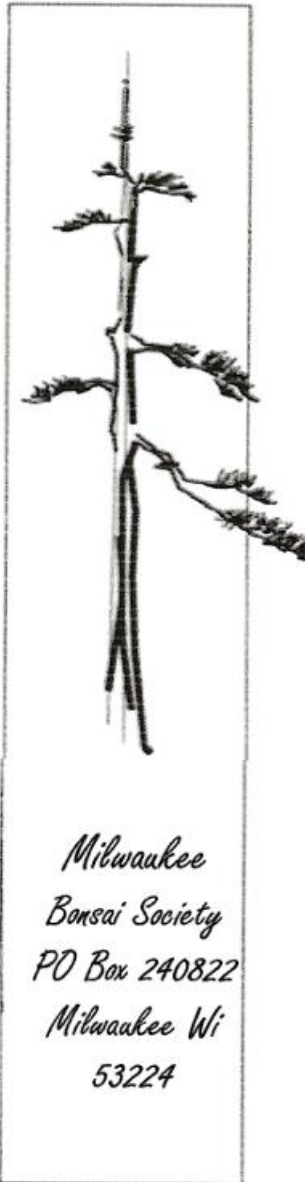


BONSAI NEWS

July 2023



Upcoming Meeting

The July meeting will cover show prep.

Pam W, Kevin S, and Scott D will provide tips for creating a visually appealing and harmonious bonsai display at a show.

They will cover topics such as choosing the right display stand, selecting accent plants that complement the bonsai tree and create a visually appealing and harmonious display.

Please note: the meeting date is July 8th due to the Independence Day holiday weekend.

Next Meeting

July 8, 2023
9 am
Boerner
Botanical

July

July 8 – Show prep/Summer Watering

July 15 – MBS picnic/Swap meet
Whitnall Park

Public welcome

July 29 – Skill Builder 101*

July 30 – Skill Builder 201*

August

August 5 – Show Display/Mid-Summer Cutback on hardy trees

August 3-13 – State Fair Exhibit

August 19 – Skill Builder 101*

August 20 – Skill Builder 201*

August 26-27 – Annual Exhibit
Lynden Sculpture Gardens

September

September 2 – Structural wiring/
late summer cutbacks

September 16 – Public Workshop

October

October 7 – Pines/Getting trees
ready for winter

*Open to MBS members only

President's Message

Hello again fellow bonsai nuts, ladies and a few gentlemen,

I don't know about you, but I'm really excited for all the great events coming up in the next few months. Summerfest is in full swing with the ethnic festivals to follow. State Fair is fast approaching too so be sure to go to the club web site to sign up for a volunteer shift or two, or three, to man the club exhibit during the run of the fair. When you volunteer you get FREE admission to the fair. I like to sign up for a morning shift then spend the rest of the day eating my way through the grounds. Heck, you can sign up for an afternoon or evening shift and come early if you want. Either way it's always a good time. I encourage everyone to help the club out with this important public outreach. Remember when you were walking through the building and stopped at the exhibit then signed up? You can be that person that says "Hey! I met you at the fair! Welcome to the club!"

We also have our club picnic coming up on July 15th at the Whitnall Park beer garden. This will be a fun time of showing and discussing our trees, club provided food and refreshments, you're on your own for alcohol, swap meet, and loads of shenanigan's, I'm sure.

We also have a fund raiser opportunity for the club with the Milwaukee Milkmen semi pro baseball team. There is a link on the club website to purchase tickets for the Tuesday July 11th game. Part of the ticket purchase price goes to the club and you do not have to be a member to use the link. Please share this with everyone you know to help us raise some funds for our little club and hopefully we can get a good number of members to go and recognized during the game.

Don't forget, the last weekend in August is the annual exhibit at Lynden Sculpture Gardens with special guest artist Bjorn Bjorholm. Please take some time to look up his free YouTube videos to get a feel for his teaching style and world class bonsai skills. You can also visit his website at bjornbjorholm.com.

Whew! All if this, along with our monthly club meetings, classes, and workshops should be enough to keep us all busy with bonsai stuff for the next few months. Keep your eyes on upcoming newsletters and the club website....oh man, I almost forgot! The website! We now have 2 DOZEN videos available for club members on the website. This has been a long road to get to this point and it's just the tip of the iceberg for what we have planned. Okay, now I'm done. Looking forward to seeing everyone at the next club meeting and upcoming events.

Erich

Displaying Bonsai

by PAM W, Kevin S, and Scott D.

To create a compelling display for your bonsai, follow three guiding principles:

1. Make the bonsai the critical element
2. Invoke a sense of harmony in nature
3. Ensure every aspect of the display is intentional

Traditionally, your goal should be to create an overall panorama that highlights the unique beauty of your bonsai. At a minimum, your display will include a pot for the bonsai, the space in which the bonsai will be placed, and the furniture piece on which the bonsai will stand.

Once you've selected your bonsai, you can start thinking about **the pot**. The color of the pot must be harmonious with the state of the bonsai. The ideal width for the pot is the width of the spread of the bonsai's branches. The pot should look as if it's evolved naturally from the width of the bonsai.

Bonsai are best viewed at eye level, which means the average table will be too low. **The stand** itself shouldn't be so ornamental that it distracts from the bonsai. As with the pot, the color of the stand should be in harmony with the state of the bonsai. Dark woods are quite attractive with most bonsai, but a lighter wood might be more attractive for a flowering bonsai.

Before selecting any specific companion object, create in your mind the idea of the scene you're trying to create. **The companion objects** should be selected for their ability to contribute and enhance this scene.

Now that you've selected your basic and companion elements, it's time to **put the entire display together**. Remember the scene or sense of nature you're trying to evoke. You want to place your elements in a way that has harmonious dimension and perspective.

Pam W, Kevin S, and Scott D will provide tips for creating a visually appealing and harmonious bonsai display at a show. They will cover topics such as choosing the right display stand, selecting accent plants that complement the bonsai tree and create a visually appealing and harmonious display.





MILWAUKEE MILKMEN

PRO BASEBALL THAT'S UDDERLY DIFFERENT

Great seats are still available for the Milwaukee Milkmen game on July 11th.

It's a great time. The parking is free, the concession prices are affordable and the entertainment between play is great.

Oh, there is baseball, too!



Our club has a unique fundraising opportunity through a partnership with the Milwaukee Milkmen baseball organization. For every ticket sold to the July 11th game MBS will receive a portion of the sales! The money made will go towards the Annual Exhibit fund for 2023.

Ticket prices range from \$9 - \$16 which is very reasonable.

This is a family friendly outing good for all ages.

Use the below link or the link located on the MBS web site to order your tickets for us to receive the credit. Ordering any other way does not allow the club to receive the sale.

This event is not just for MBS members. Anyone you know can use the link and MBS will receive the credit.

<https://fevo.me/3lnb8D4>

Go Milkmen!



Ancient Arts Bonsai

Bonsai Supplier Established
in 2005

Bonsai a Growing Hobby
Wisconsin's Leading Full Line Bonsai Supplier

Tools, Wire – Aluminum & Copper, Pots, Fertilizers
Soils – Akadama, Lava, Pumice, Kanuma, Blends
Trees – Tropical, Deciduous, Conifers, Evergreens
Services – Lessons, Consults, Repotting, Wiring, Boarding

See our updated Website: aabonsai.com

Email – aabonsai@charter.net

Phone – 262-490-8733

~~~~~  
In search of... 4", 6" and 8" nursery pots. Maybe you have a bunch tucked away in the garage or basement? I'd love to take them off you hands :o) Please contact Kris at [hagr8da@mac.com](mailto:hagr8da@mac.com) or text to 262-512-1228



~~~~~  
MBS logo tumblers are still available for the great price of \$20 each. The travel tumblers hold 16oz of hot or cold fluid and feature the MBS logo. Contact Melissa J. for ordering information (missyuc2@yahoo.com or 414-350-5924 -call or text).



New Videos for June are now available!

In the month of June, six new videos have been posted to the MBS Membership Video Site. You will find two new recordings of the main topics from our monthly meetings, two videos in the Special Topics section, as well as two Focus Topic videos.

Here's what's new:

Monthly Meetings

May Meeting Main Topic – The Art of Air Layering – by Steve Carini

June Meeting Main Topic – Summer Juniper Work – by Steve Carini and Brian Susler

Focus Topics

Repotting your Tropical Bonsai - by Irene Hadley and Kevin Stoeveken

Pruning Tropicals - by Ron Fortman

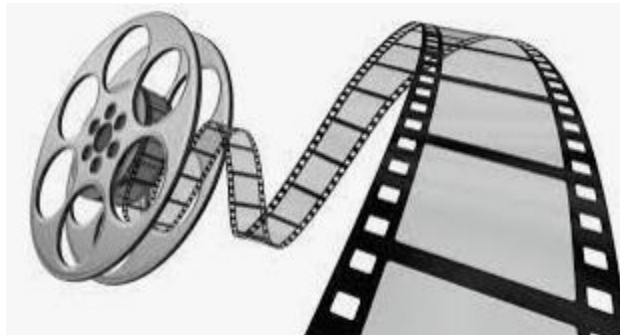
Special Information

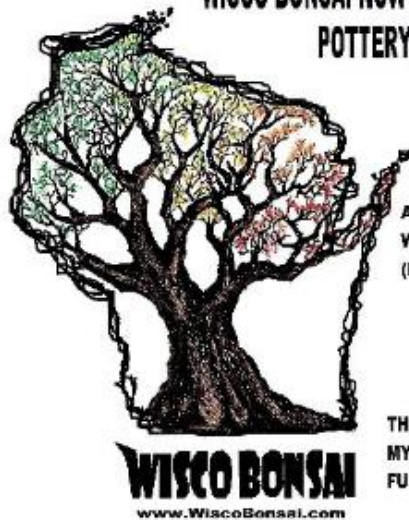
Cedar Apple Rust - by Steve Carini

MBS Members Flowering Bonsai Trees

Remember, the site is password protected and we ask that you do not share the login information with anyone outside of our organization. If you have lost or did not receive your login information, send us an email.

Additional videos will be added next month.





WISCO BONSAI NOW HAS THE AREA'S LARGEST SELECTION OF ARTISIAN, HANDMADE BONSAI POTTERY, MUCH OF WHICH CONSISTS OF LOCAL AND REGIONAL ARTISTS.

WE ALSO NOW CARRY A LINE OF TOOLS GEARED TOWARD THE BEGINNER AND NOVICE AMONG US, ALONG WITH ALL MANNER OF BONSAI SUNDRIES, SUCH AS, COPPER & ALUMINUM WIRE, JIN SEAL, WOUND PUTTY, ETC.

AND OF COURSE THERES THE SUBSTRATE, WISCO GOLD... THE BEST NON-JAPANESE MIX AROUND WE ALSO OCCAISIONALLY HAVE OTHER RAW SUBSTRATE COMPONENTS AVAILABLE (PUMICE, LAVA, ETC).

SEVERAL SIZES OF KANUMA NOW AVAILABLE !!!

GOT ORCHIDS ? WE HAVE A SUBSTRATE FOR THOSE TOO !!!

WiscoBonsai@gmail.com

414-248-3827

www.WiscoBonsai.com

INSTAGRAM @wisco.bonsai

THE SHOP NOW HAS REGULAR HOURS IN THE SPRING, SUMMER AND FALL. HOURS ARE UPDATED WEEKLY ON MY GOOGLE INFO SITE. OR, TO BE THE AMONG FIRST TO KNOW ABOUT ALL THE WORKSHOPS AND OTHER FUN GOING DOWN AT WISCO BONSAI, JUST SHOOT AN EMAIL AND I WILL ADD YOU TO THE EMAIL LIST.

"BONSAI IS THE ART OF NATURE, GUIDED AND NURTURED BY HUMAN HANDS" - KMS



An Event Within An Event

By Pam W

Shop The Swap at the Annual Picnic July 15th

If you're looking to buy or sell any hard-to-find bonsai, containers, stands, tools or memorabilia, then the MBS swap meet is the selling or shopping experience for you!

In the Swap Meet you will find everything under the bonsai sun from concave cutters to pots and toys and so much more!

With MBS members and the public spectators during our annual picnic throughout the day, checking out the swap meet, you better make sure you get their quick before all the good stuff is gone!

How To Participate

If you are interested in participating in the Swap Meet, bring your own table, chair, pop-up tent (optional), and stuff to swap.

MBS Pottery class # 2

We had a second pottery class early in June. Its goal was to make a pot and an accent pot. We had 6 students and it looked like they all had fun. They got both written instruction and a group of videos that I made to help them make the pots and to help me teach the class. They left with pots to slowly dry and then put feet on after a few days and then continue drying. Then they would give them back to me for firing, glazing and then the second firing.



There are a few pictures in the link below.

<https://photos.app.goo.gl/KhntyUZ2TEgWEc5f8>



State Fair will be here before you realize. We need approximately 20 trees for each of the 3 exhibits that run the course of the fair and a slew of volunteers, 9-10 each day for a total of 90ish.

As a member of the club, you already know more about bonsai than the general public who walk by our booth. Remember when you walked past? Remember the questions you asked? The questions aren't difficult to answer...most are which tree is yours? Or which is the oldest tree? If you don't know the answer to a question you can always hand that person off to one of the other members working the booth. You would never have to be in the booth alone.

Plus, you get a ticket to the fair for free. Either before or after your shift at the booth you can enjoy all the fair has to offer without paying for admission.

Also, please enter a tree in the exhibit to show off. There are multiple categories: Novice, Intermediate, Advanced and Display only. The judges have great feedback to offer so your tree can advance on its bonsai path. If you don't think your tree is quite ready for judging, but still would like to show it off, enter it as a display only tree. Everyone still gets to see it, but it won't be judged.

We can't have a successful run at the fair without your help.

Please click the Eventbrite links below or use the links on the website to sign up to volunteer or exhibit a tree!

[State Fair Tree Exhibits](#)

[State Fair Volunteers](#)



PO Box 240822
Milwaukee, WI 53224
www.milwaukeebonsai.org

Next MBS meeting will be
July 8, 2023 @ 9am
Boerner Botanical Gardens

2023 MBS OFFICERS

President [Erich B](#)
1st VP [Pam W](#)
2nd VP [Rob S](#)
Secretary [Rick W](#)
Treasurer [Clif O](#)
Director [John N](#)
Director [Irene H](#)
Director [Mike B](#)

Other Club Functions

Newsletter [Melissa J](#)
Webmaster [Pam W](#)
Librarian [Greg R](#)

PAB Board-Ron F, Houston S & Judy S



*The sunflower opens up
Where its sun smiles at it
Bright, yellow, happy*

~Editor Bob's Blog